

Be the Change

Solo: verses

$\text{♩} = 65$ Cm F Dm Gm

So much noise and dis - re - spect; we find it ev - 'ry place.
There is ha - tred more and more; it's ev - 'ry-where I see, —

5 Eb D Gm Gm

Trou-bles that we don't ex - pect and peo-ple in your face. Don't you
from the folks who live next door and Wash-ing - ton, D. C. If I

9 Cm F Dm

wish you could make it change? Don't you wish you knew
rail at it all a - lone would my voice get through?

12 G Csus4 C F

if there was some-thing you could do?
What can one lit - tle per-son do?

16 Congregation F7 Bb Bb EbM7 EbM7 Dm11

Be the change. Be the change. What - e - ver others


22 Gm Gm/E Ebm6 Fm7 E7/Bb Eb


do, all the po-wer is in you. Take the lead. All you need

28 Cm7b5/F Bb D7/A Gm F Bb 1 G#dim/B

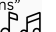
if you want to change the world, be the change.

Arrangement Permissions

 One-time Adaptation

 New Arrangement OK

 Seek permission to arrange

Look at the Sing Out Love "Permissions" section for further explanation 

Be the Change - 2

2 Solo: Verse 3

33 B \flat A \flat E \flat D \flat

You give me bad, I give it back, and 'round and 'round we

37 D \flat E \flat m A \flat D \flat

go. It on - ly gets worse, that's a gua-ran - tee.

41 D \flat C \flat G \flat A

But be - fore we have one more at-tack, here's what I need to

45 A D \flat m D \flat 7 G \flat

know: Who will break the cir - cle if not me?

Congregation

49 F \sharp 7 B B EM7 EM7 D \sharp m11

Be the change. Be the change. What - e - ver oth-ers

55 G \sharp m G \sharp m/F Em6 F \sharp m7 F7/B EM7

do, all the po-wer is in you. Take the lead. All you need

61 C \sharp m7b5/F \sharp B D \sharp 7/A \sharp G \sharp m F \sharp G \sharp m

if you want to change the world, be the change.

65 C \sharp m7b5 B/F \sharp D \sharp 7/G G \sharp m F \sharp B

It's the way we'll change the world, be the change.

Be the Change

Solo: verses

$\text{♩} = 65$ **Bm** **E** **C#m** **F#m**

So much noise and dis - re - spect; we find it ev - 'ry place.
There is ha - tred more and more; it's ev - 'ry-where I see, —

5 **D** **C#** **F#m** **F#m**

Trou - bles that we don't ex - pect and peo - ple in your face. Don't you
from the folks who live next door and Wash - ing - ton, D. C. If I

9 **Bm** **E** **C#m**

wish you could make it change? Don't you wish you knew
rail at it all a - lone would my voice get through?

12 **F#** **Bsus4** **B** **E**

if there was some - thing you could do?
What can one lit - tle per - son do?

Congregation

16 **E7** **A** **A** **DM7** **DM7** **C#m11**

Be the change. Be the change. What - e - ver oth - ers


22 **F#m** **F#m/D#** **Dm6** **Em7** **D#7/A** **D**


do, all the po - wer is in you. Take the lead. All you need

28 **Bm7b5/E** **A** **C#7/G#** **F#m** **E** **A** **1F#dim/A#**

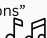
if you want to change the world, be the change.

Arrangement Permissions

 One-time Adaptation

 New Arrangement OK

 Seek permission to arrange

Look at the Sing Out Love "Permissions" section for further explanation 

Be the Change - 2

2 Solo: Verse 3

33 A G D C
You give me bad, I give it back, and 'round and 'round we

37 C Dm G C
go. It on - ly gets worse, that's a gua-ran - tee.

41 C Bb F G#
But be - fore we have one more at-tack, here's what I need to

45 G# Cm C7 F
know: Who will break the cir - cle if not me?

Congregation

49 F7 Bb Bb EbM7 EbM7 Dm11
Be the change. Be the change. What - e - ver others

55 Gm Gm/Fb Ebm6 Fm7 Fb7/Bb EbM7
do, all the po-wer is in you. Take the lead. All you need

61 Cm7b5/F Bb D7/A Gm F Gm
if you want to change the world, be the change.

65 Cm7b5 Bb/F D7/Gb Gm F Bb
It's the way we'll change the world, be the change.

Be the Change

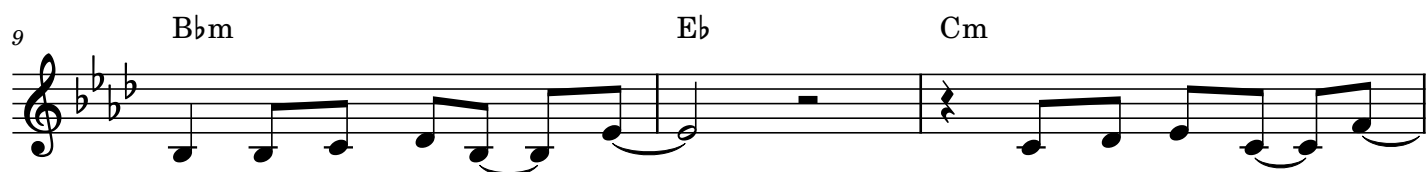
Solo: verses



So much noise and dis - re - spect; we find it ev - 'ry place.
There is ha - tred more and more; it's ev - 'ry-where I see, —



Trou-bles that we don't ex - pect and peo-ple in your face. Don't you
from the folks who live next door and Wash-ing-ton, D. C. If I



wish you could make it change? Don't you wish you knew
rail at it all a - lone would my voice get through?



if there was some-thing you could do?
What can one lit - tle per-son do?

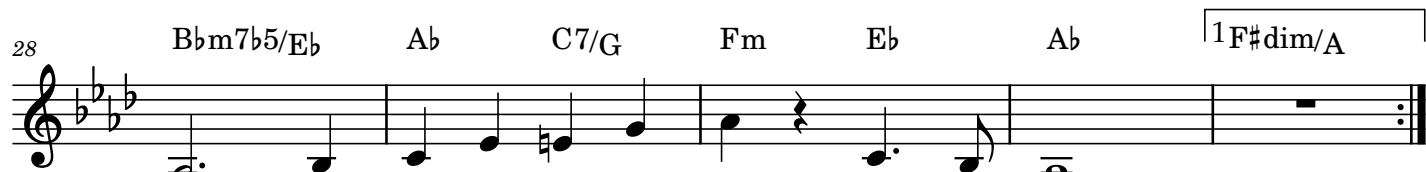
Congregation



Be the change. Be the change. What - e - ver oth-ers



do, all the po-wer is in you. Take the lead. All you need



if you want to change the world, be the change

Words & music: Michael Sansonia, b. 1953

© Michael Sansonia

Sing Out Love expiration December 2028

Arrangement Permissions

👉 One-time Adaptation

👍 New Arrangement OK

🚫 Seek permission to arrange

Look at the Sing Out Love "Permissions" section for further explanation

Be the Change - 2

2 Solo: Verse 3

33 A^b G^b D^b C^b
 You give me bad, I give it back, and 'round and 'round we

37 C^b $D^b m$ G^b C^b
 go. It on - ly gets worse, that's a gua-ran - tee.

41 C^b B^b F^b G
 But be - fore we have one more at-tack, here's what I need to

45 G $C^b m$ $C^b 7$ F^b
 know: Who will break the cir - cle if not me?

Congregation

49 $E7$ A A $DM7$ $DM7$ $C\#m11$
 Be the change. Be the change. What - e - ver oth-ers

55 $F\#m$ $F\#m/E^b$ $Dm6$ $Em7$ $E^b 7/A$ $DM7$
 do, all the po-wei is in you. Take the lead. All you need

61 $Bm7^b5/E$ A $C\#7/G\#$ $F\#m$ E $F\#m$
 if you want to change the world, be the change.

65 $Bm7^b5$ A/E $C\#7/F$ $F\#m$ E A
 It's the way we'll change the world, be the change.

Be the Change

Solo: verses

♩ = 65

Am D Bm Em

So much noise and dis - re - spect; we find it ev - 'ry place.
There is ha - tred more and more; it's ev - 'ry-where I see, —

5 C B Em Em

Trou-bles that we don't ex - pect and peo-ple in your face. Don't you
from the folks who live next door and Wash-ing - ton, D. C. If I

9 Am D Bm

wish you could make it change? Don't you wish you knew
rail at it all a - lone would my voice get through?

12 E Asus4 A D

if there was some-thing you could do?
What can one lit - tle per-son do?

Congregation

16 D7 G G CM7 CM7 Bm11

Be the change. Be the change. What - e - ver oth-ers

22 Em Em/C# Cm6 Dm7 C#7/G C

do, all the po-wer is in you. Take the lead. All you need

28 Am7b5/D G B7/F# Em D G 1 E#dim/G#

if you want to change the world, be the change.

Arrangement Permissions

👉 One-time Adaptation

👍 New Arrangement OK

🚫 Seek permission to arrange

Look at the Sing Out Love "Permissions" section for further explanation

Be the Change - 2

2 Solo: Verse 3

33 G F C Bb
 You give me bad, I give it back, and 'round and 'round we

37 Bb Cm F Bb
 go. It on - ly gets worse, that's a gua-ran - tee.

41 Bb Ab Eb F#
 But be - fore we have one more at-tack, here's what I need to

45 F# Bbm Bb7 Eb
 know: Who will break the cir - cle if not me?

Congregation

49 Eb7 Ab Ab DbM7 DbM7 Cm11
 Be the change. Be the change. What - e - ver oth-ers

55 Fm Fm/Eb Dbm6 Ebm7 Eb7/Ab DbM7
 do, all the po-wer is in you. Take the lead. All you need

61 Bbm7b5/Eb Ab C7/G Fm Eb Fm
 if you want to change the world, be the change.

65 Bbm7b5 Ab/Eb C7/Fb Fm Eb Ab
 It's the way we'll change the world, be the change.

Be the Change

Solo: verses

$\text{♩} = 65$ Abm

Db

Bbm

Eb m



So much noise and dis - re - spect; we find it ev - 'ry place.
There is ha - tred more and more; it's ev - 'ry - where I see, —



Trou - bles that we don't ex - pect and peo - ple in your face. Don't you
from the folks who live next door and Wash - ing - ton, D. C. If I



wish you could make it change? Don't you wish you knew
rail at it all a - lone would my voice get through?



if there was some - thing you could do?
What can one lit - tle per - son do?

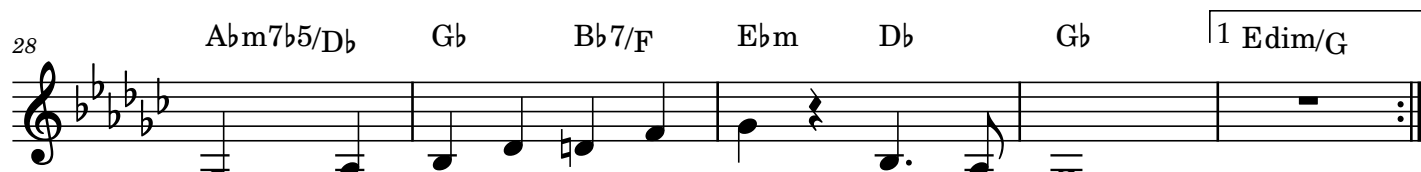
Congregation



Be the change. Be the change. What - e - ver oth - ers



do, all the po - wer is in you. Take the lead. All you need




if you want to change the world, be the change.


Words & music: Michael Sansonia, b. 1953

© Michael Sansonia

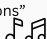
Sing Out Love expiration December 2028

Arrangement Permissions

 One-time Adaptation

 New Arrangement OK

 Seek permission to arrange

Look at the Sing Out Love "Permissions" section for further explanation 

Be the Change - 2

2 Solo: Verse 3

33 G \flat F \flat C \flat B \flat

You give me bad, I give it back, and 'round and 'round we

37 B \flat C \flat m F \flat B \flat

go. It on - ly gets worse, that's a gua-ran - tee.

41 B \flat A \flat E \flat F

But be - fore we have one more at-tack, here's what I need to

45 F B \flat m B \flat 7 E \flat

know: Who will break the cir - cle if not me?

Congregation

49 D7 G G CM7 CM7 Bm11

Be the change. Be the change. What - e - ver oth-ers

55 Em Em/D \flat Cm6 Dm7 D \flat 7/G CM7

do, all the po-wer is in you. Take the lead. All you need

61 Am7 \flat 5/D G B7/F \sharp Em D Em

if you want to change the world, be the change.

65 Am7 \flat 5 G/D B7/E \flat Em D G

It's the way we'll change the world, be the change.

Be the Change

Solo: verses

♩ = 65 G#m C# A#m D#m

So much noise and dis - re - spect; we find it ev - 'ry place.
There is ha - tred more and more; it's ev - 'ry-where I see, —

5 B A# D#m D#m

Trou - bles that we don't ex - pect and peo - ple in your face. Don't you
from the folks who live next door and Wash - ing - ton, D. C. If I

9 G#m C# A#m

wish you could make it change? Don't you wish you knew
rail at it all a - lone would my voice get through?

12 D# G#sus4 G# C#

if there was some - thing you could do?
What can one lit - tle per - son do?

Congregation

16 C#7 F# F# BM7 BM7 A#m11

Be the change. Be the change. What - e - ver oth - ers

22 D#m D#m/B# Bm6 C#m7 B#7/F# B

do, all the po - wer is in you. Take the lead. All you need

28 G#m7b5/C# F# A#7/E# D#m C# F# 1 D#dim/F#

if you want to change the world, be the change.

Arrangement Permissions

👇 One-time Adaptation

👍 New Arrangement OK

🚫 Seek permission to arrange

Look at the Sing Out Love "Permissions" section for further explanation



Be the Change - 2

2 Solo: Verse 3

33 F# E B A
You give me bad, I give it back, and 'round and 'round we

37 A Bm E A
go. It on - ly gets worse, that's a gua-ran - tee.

41 A G D E#
But be - fore we have one more at-tack, here's what I need to

45 E# Am A7 D
know: Who will break the cir - cle if not me?

49 Congregation D7 G G CM7 CM7 Bm11
Be the change. Be the change. What-e - ver oth-ers

55 Em Em/Db Cm6 Dm7 Db7/G CM7
do, all the po-wer is in you. Take the lead. All you need

61 Am7b5/D G B7/F# Em D Em
if you want to change the world, be the change.

65 Am7b5 G/D B7/Eb Em D G
It's the way we'll change the world, be the change.

Be the Change

Solo: verses

♩ = 65

Gm

C

Am

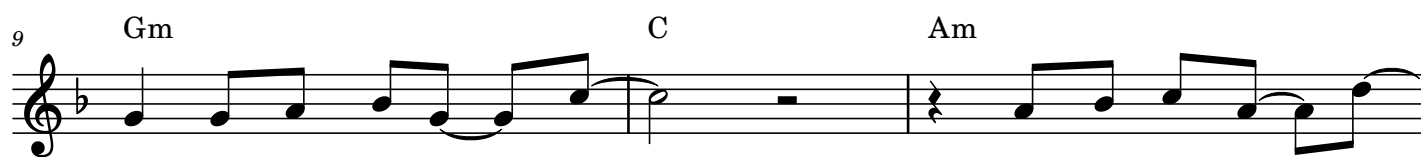
Dm



So much noise and dis - re - spect; we find it ev - 'ry place.
There is ha - tred more and more; it's ev - 'ry - where I see, —



Trou - bles that we don't ex - pect and peo - ple in your face. Don't you
from the folks who live next door and Wash - ing - ton, D. C. If I



wish you could make it change? Don't you wish you knew
rail at it all a - lone would my voice get through?



if there was some - thing you could do?
What can one lit - tle per - son do?

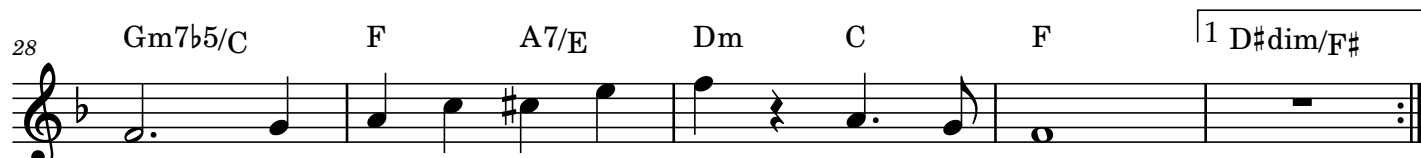
Congregation



Be the change. Be the change. What - e - ver others



do, all the po - wer is in you. Take the lead. All you need



if you want to change the world, be the change.

Arrangement Permissions

👉 One-time Adaptation

👍 New Arrangement OK

🚫 Seek permission to arrange

Look at the *Sing Out Love* "Permissions" section for further explanation

Words & music: Michael Sansonia, b. 1953

© Michael Sansonia

Sing Out Love expiration December 2028

Be the Change - 2

2 Solo: Verse 3

33 F Eb Bb Ab

You give me bad, I give it back, and 'round and 'round we

37 Ab Bbm Eb Ab

go. It on - ly gets worse, that's a gua-ran - tee.

41 Ab Gb Db E

But be - fore we have one more at-tack, here's what I need to

45 E Abm Ab7 Db

know: Who will break the cir - cle if not me?

Congregation

49 C#7 F# F# BM7 BM7 A#m11

Be the change. Be the change. What - e - ver oth-ers

55 D#m D#m/C Bm6 C#m7 C7/F# BM7

do, all the po-er is in you. Take the lead. All you need

61 G#m7b5/C# F# A#7/E# D#m C# D#m

if you want to change the world, be the change.

65 G#m7b5 F#/C# A#7/D D#m C# F#

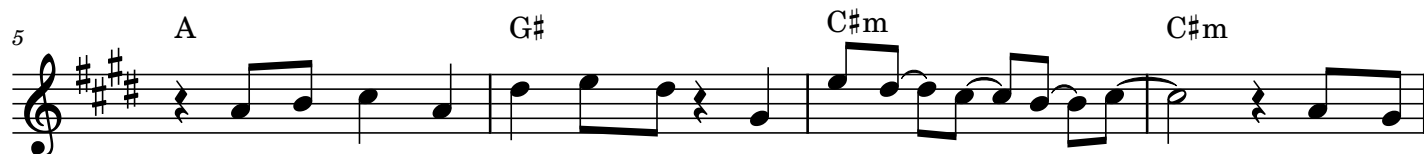
It's the way we'll change the world, be the change.

Be the Change

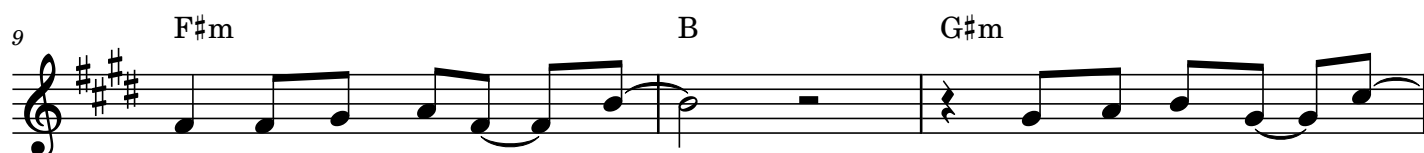
Solo: verses



So much noise and dis - re - spect; we find it ev - 'ry place.
There is ha - tred more and more; it's ev - 'ry-where I see, —



Trou-bles that we don't ex - pect and peo-ple in your face. Don't you
from the folks who live next door and Wash-ing-ton, D. C. If I



wish you could make it change? Don't you wish you knew
rail at it all a - lone would my voice get through?



if there was some-thing you could do?
What can one lit - tle per-son do?

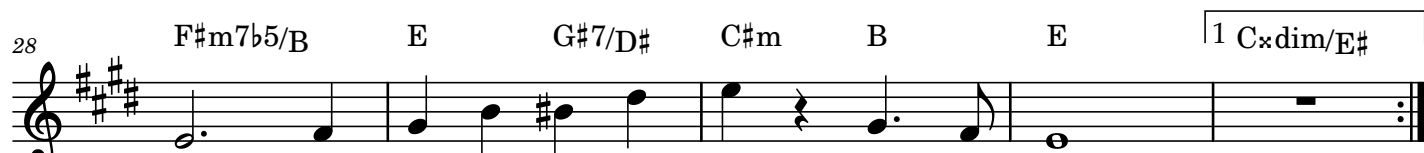
Congregation



Be the change. Be the change. What - e - ver oth-ers



do, all the po-wer is in you. Take the lead. All you need



if you want to change the world, be the change.

Arrangement Permissions

👉 One-time Adaptation

👍 New Arrangement OK

🚫 Seek permission to arrange

Look at the *Sing Out Love* "Permissions" section for further explanation

Be the Change - 2

2 Solo: Verse 3

33 E D A G

You give me bad, I give it back, and 'round and 'round we

37 G Am D G

go. It on - ly gets worse, that's a gua-ran - tee.

41 G F C D#

But be - fore we have one more at-tack, here's what I need to

45 D# Gm G7 C

know: Who will break the cir - cle if not me?

Congregation

49 C7 F F BbM7 BbM7 Am11

Be the change. Be the change. What - e - ver oth-ers

55 Dm Dm/Cb Bbm6 Cm7 Cb7/F BbM7

do, all the po-wei is in you. Take the lead. All you need

61 Gm7b5/C F A7/E Dm C Dm

if you want to change the world, be the change.

65 Gm7b5 F/C A7/Db Dm C F

It's the way we'll change the world, be the change.

Be the Change

Solo: verses

♩ = 65 Fm Bb Gm Cm

So much noise and dis - re - spect; we find it ev - 'ry place.
There is ha - tred more and more; it's ev - 'ry-where I see, —

5 Ab G Cm Cm

Trou - bles that we don't ex - pect and peo - ple in your face. Don't you
from the folks who live next door and Wash - ing - ton, D. C. If I

9 Fm Bb Gm

wish you could make it change? Don't you wish you knew
rail at it all a - lone would my voice get through?

12 C F#sus4 F Bb

if there was some - thing you could do?
What can one lit - tle per - son do?

Congregation

16 Bb7 Eb Eb AbM7 AbM7 Gm11

Be the change. Be the change. What - e - ver oth - ers

22 Cm Cm/A Abm6 Bbm7 A7/Eb Ab

do, all the po - wer is in you. Take the lead. All you need

28 Fm7b5/Bb Eb G7/D Cm Bb Eb 1 C#dim/E

if you want to change the world, be the change.

Arrangement Permissions

👉 One-time Adaptation

👍 New Arrangement OK

🚫 Seek permission to arrange

Look at the Sing Out Love "Permissions" section for further explanation

Be the Change - 2

2 Solo: Verse 3

33 Eb Db Ab Gb

You give me bad, I give it back, and 'round and 'round we

37 Gb Abm Db Gb

go. It on - ly gets worse, that's a gua-ran - tee.

41 Gb Fb Cb D

But be - fore we have one more at-tack, here's what I need to

45 D Gbm Gb7 Cb

know: Who will break the cir - cle if not me?

Congregation

49 B7 E E AM7 AM7 G#m11

Be the change. Be the change. What - e - ver oth-ers

55 C#m C#m/Bb Am6 Bm7 Bb7/E AM7

do, all the po-wer is in you. Take the lead. All you need

61 F#m7b5/B E G#7/D# C#m B C#m

if you want to change the world, be the change.

65 F#m7b5 E/B G#7/C C#m B E

It's the way we'll change the world, be the change.

Be the Change - 2

2 Solo: Verse 3

33 D C G F

You give me bad, I give it back, and 'round and 'round we

37 F Gm C F

go. It on - ly gets worse, that's a gua-ran - tee.

41 F Eb Bb C#

But be - fore we have one more at-tack, here's what I need to

45 C# Fm F7 Bb

know: Who will break the cir - cle if not me?

Congregation

49 Bb7 Eb Eb AbM7 AbM7 Gm11

Be the change. Be the change. What - e - ver oth-ers

55 Cm Cm/Bb Abm6 Bbm7 Bb7/Eb AbM7

do, all the po-wer is in you. Take the lead. All you need

61 Fm7b5/Bb Eb G7/D Cm Bb Cm

if you want to change the world, be the change.

65 Fm7b5 Eb/Bb G7/Cb Cm Bb Eb

It's the way we'll change the world, be the change.

Be the Change

Solo: verses

$\text{♩} = 65$ Ebm

Ab

Fm

Bbm



So much noise and dis - re - spect; we find it ev - 'ry place.
There is ha - tred more and more; it's ev - 'ry-where I see, —

5

Gb

F

Bbm

Bbm



Trou - bles that we don't ex - pect and peo - ple in your face. Don't you
from the folks who live next door and Wash - ing - ton, D. C. If I

9

Ebm

Ab

Fm



wish you could make it change? Don't you wish you knew
rail at it all a - lone would my voice get through?

12

Bb

Ebsus4

Eb

Ab



if there was some - thing you could do?
What can one lit - tle per - son do?

Congregation

16

Ab7

Db

Db

Gbm7

Gbm7

Fm11



Be the change. Be the change. What - e - ver oth - ers

22

Bbm

Bbm/G

Gbm6

Abm7

G7/Db

Gb



do, all the po - wer is in you. Take the lead. All you need

28

Ebm7b5/Ab

Db

F7/C

Bbm

Ab

Db

1 Bdim/D



if you want to change the world, be the change.

Words & music: Michael Sansonia, b. 1953

© Michael Sansonia

Sing Out Love expiration December 2028

Arrangement Permissions

One-time Adaptation

New Arrangement OK

Seek permission to arrange

Look at the Sing Out Love "Permissions" section for further explanation

Be the Change - 2

2 Solo: Verse 3

33 $D\flat$ $C\flat$ $G\flat$ $F\flat$

You give me bad, I give it back, and 'round and 'round we

37 $F\flat$ $G\flat m$ $C\flat$ $F\flat$

go. It on - ly gets worse, that's a gua-ran - tee.

41 $F\flat$ $E\flat$ $B\flat$ C

But be - fore we have one more at-tack, here's what I need to

45 C $F\flat m$ $F\flat 7$ $B\flat$

know: Who will break the cir - cle if not me?

Congregation

49 $A7$ D D $GM7$ $GM7$ $F\sharp m11$

Be the change. Be the change. What - e - ver others

55 Bm $Bm/A\flat$ $Gm6$ $Am7$ $A\flat 7/D$ $GM7$

do, all the po-wer is in you. Take the lead. All you need

61 $Em7\flat 5/A$ D $F\sharp 7/C\sharp$ Bm A Bm

if you want to change the world, be the change.

65 $Em7\flat 5$ D/A $F\sharp 7/B\flat$ Bm A D

It's the way we'll change the world, be the change.

Be the Change

Solo: verses

$\text{♩} = 65$ D#m

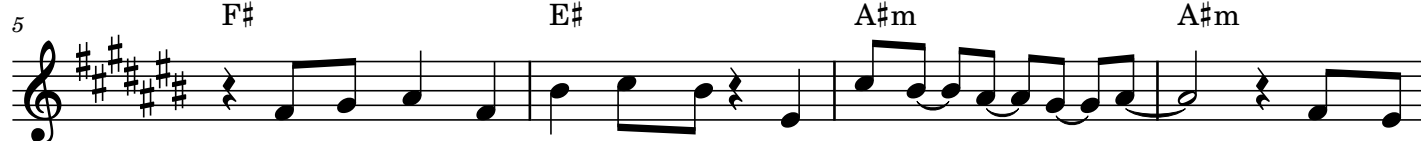
G#

E#m

A#m



So much noise and dis - re - spect; we find it ev - 'ry place.
There is ha - tred more and more; it's ev - 'ry - where I see, —



Trou - bles that we don't ex - pect and peo - ple in your face. Don't you
from the folks who live next door and Wash - ing - ton, D. C. If I



wish you could make it change? Don't you wish you knew
rail at it all a - lone would my voice get through?



if there was some - thing you could do?
What can one lit - tle per - son do?

Congregation



Be the change. Be the change. What - e - ver oth - ers





do, all the po - wer is in you. Take the lead. All you need



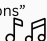
if you want to change the world, be the change.

Arrangement Permissions

 One-time Adaptation

 New Arrangement OK

 Seek permission to arrange

Look at the Sing Out Love "Permissions" section for further explanation 

Be the Change - 2

2 Solo: Verse 3

33 C# B F# E
You give me bad, I give it back, and 'round and 'round we

37 E F#m B E
go. It on - ly gets worse, that's a gua-ran - tee.

41 E D A B#
But be - fore we have one more at-tack, here's what I need to

45 B# Em E7 A
know: Who will break the cir - cle if not me?

Congregation

49 A7 D D GM7 GM7 F#m11
Be the change. Be the change. What - e - ver oth-ers

55 Bm Bm/Ab Gm6 Am7 Ab7/D GM7
do, all the po-wer is in you. Take the lead. All you need

61 Em7b5/A D F#7/C# Bm A Bm
if you want to change the world, be the change.

65 Em7b5 D/A F#7/Bb Bm A D
It's the way we'll change the world, be the change.

Be the Change

Solo: verses

$\text{♩} = 65$ Dm G Em Am

So much noise and dis - re - spect; we find it ev - 'ry place.
There is ha - tred more and more; it's ev - 'ry - where I see, —

5 F E Am Am

Trou - bles that we don't ex - pect and peo - ple in your face. Don't you
from the folks who live next door and Wash - ing - ton, D. C. If I

9 Dm G Em

wish you could make it change? Don't you wish you knew
rail at it all a - lone would my voice get through?

12 A Dsus4 D G

if there was some - thing you could do?
What can one lit - tle per - son do?

16 Congregation G7 C C FM7 FM7 Em11

Be the change. Be the change. What - e - ver oth - ers


22 Am Am/F# Fm6 Gm7 F#7/C F


do, all the po - wer is in you. Take the lead. All you need

28 Dm7b5/G C E7/B Am G C 1 A#dim/C#

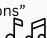
if you want to change the world, be the change.

Arrangement Permissions

 One-time Adaptation

 New Arrangement OK

 Seek permission to arrange

Look at the Sing Out Love "Permissions" section for further explanation 

Be the Change - 2

2 Solo: Verse 3

33 C B \flat F E \flat

You give me bad, I give it back, and 'round and 'round we

37 E \flat Fm B \flat E \flat

go. It on - ly gets worse, that's a gua - ran - tee.

41 E \flat D \flat A \flat B

But be - fore we have one more at-tack, here's what I need to

45 B E \flat m E \flat 7 A \flat

know: Who will break the cir - cle if not me?

Congregation

49 G \sharp 7 C \sharp C \sharp F \sharp M7 F \sharp M7 E \sharp m11

Be the change. Be the change. What - e - ver oth-ers

55 A \sharp m A \sharp m/G F \sharp m6 G \sharp m7 G7/C \sharp F \sharp M7

do, all the po-wer is in you. Take the lead. All you need

61 D \sharp m7 \flat 5/G \sharp C \sharp E \sharp 7/B \sharp A \sharp m G \sharp A \sharp m

if you want to change the world, be the change.

65 D \sharp m7 \flat 5 C \sharp /G \sharp E \sharp 7/A A \sharp m G \sharp C \sharp

It's the way we'll change the world, be the change.

Be the Change

Solo: verses

$\text{♩} = 65$ $\text{D}\flat\text{m}$

$\text{G}\flat$

$\text{E}\flat\text{m}$

$\text{A}\flat\text{m}$



So much noise and dis - re - spect; we find it ev - 'ry place.
There is ha - tred more and more; it's ev - 'ry-where I see, —



Trou - bles that we don't ex - pect and peo - ple in your face. Don't you
from the folks who live next door and Wash - ing - ton, D. C. If I



wish you could make it change? Don't you wish you knew
rail at it all a - lone would my voice get through?

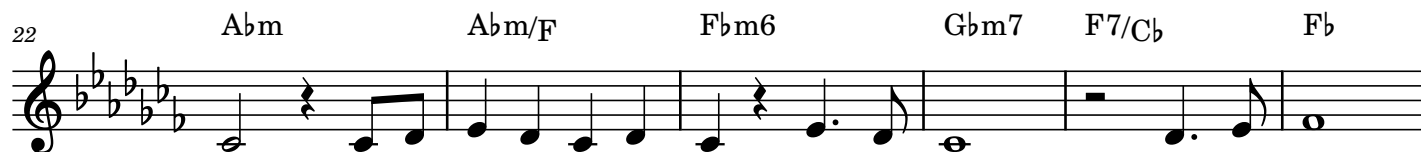


if there was some - thing you could do?
What can one lit - tle per - son do?

Congregation



Be the change. Be the change. What - e - ver oth - ers



do, all the po - wer is in you. Take the lead. All you need



if you want to change the world, be the change.

Arrangement Permissions

One-time Adaptation

New Arrangement OK

Seek permission to arrange

Look at the *Sing Out Love* "Permissions" section for further explanation

Words & music: Michael Sansonia, b. 1953

© Michael Sansonia

Sing Out Love expiration December 2028

Be the Change - 2

2 **Solo: Verse 3**

33 $C\flat$ $B\flat$ $F\flat$ $E\flat$

You give me bad, I give it back, and 'round and 'round we

37 $E\flat$ $F\flat m$ $B\flat$ $E\flat$

go. It on - ly gets worse, that's a gua-ran - tee.

41 $E\flat$ $D\flat$ $A\flat$ $B\flat$

But be - fore we have one more at-tack, here's what I need to

45 $B\flat$ $E\flat m$ $E\flat 7$ $A\flat$

know: Who will break the cir - cle if not me?

Congregation

49 $G7$ C C $FM7$ $FM7$ $Em11$

Be the change. Be the change. What - e - ver oth-ers

55 Am $Am/G\flat$ $Fm6$ $Gm7$ $G\flat 7/C$ $FM7$

do, all the po-wer is in you. Take the lead. All you need

61 $Dm7\flat 5/G$ C $E7/B$ Am G Am

if you want to change the world, be the change.

65 $Dm7\flat 5$ C/G $E7/A\flat$ Am G C

It's the way we'll change the world, be the change.

Be the Change

Solo: verses

$\text{♩} = 65$ C#m

F#

D#m

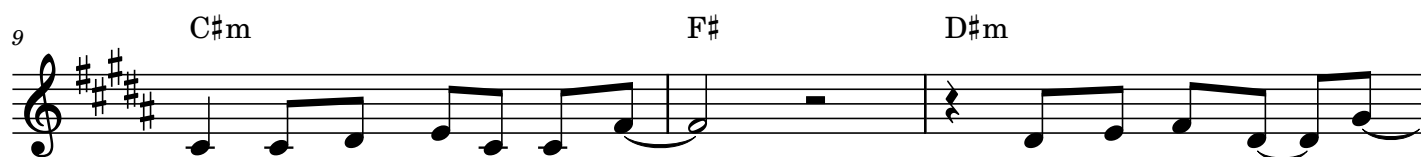
G#m



So much noise and dis - re - spect; we find it ev - 'ry place.
There is ha - tred more and more; it's ev - 'ry-where I see, —



Trou - bles that we don't ex - pect and peo - ple in your face. Don't you
from the folks who live next door and Wash - ing - ton, D. C. If I



wish you could make it change? Don't you wish you knew
rail at it all a - lone would my voice get through?

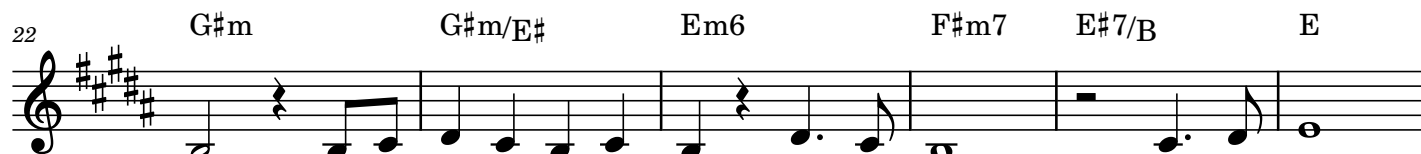


if there was some - thing you could do?
What can one lit - tle per - son do?

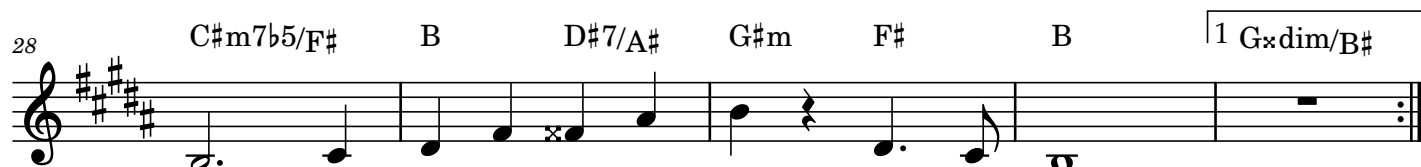
Congregation



Be the change. Be the change. What - e - ver oth - ers



do, all the po - wer is in you. Take the lead. All you need




if you want to change the world, be the change.


Words & music: Michael Sansonia, b. 1953

© Michael Sansonia

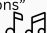
Sing Out Love expiration December 2028

Arrangement Permissions

 One-time Adaptation

 New Arrangement OK

 Seek permission to arrange

Look at the *Sing Out Love* "Permissions" section for further explanation 

Be the Change - 2

2 Solo: Verse 3

33 B A E D
You give me bad, I give it back, and 'round and 'round we

37 D Em A D
go. It on - ly gets worse, that's a gua-ran - tee.

41 D C G A#
But be - fore we have one more at-tack, here's what I need to

45 A# Dm D7 G
know: Who will break the cir - cle if not me?

Congregation

49 G7 C C FM7 FM7 Em11
Be the change. Be the change. What - e - ver oth-ers

55 Am Am/Gb Fm6 Gm7 Gb7/C FM7
do, all the po-wer is in you. Take the lead. All you need

61 Dm7b5/G C E7/B Am G Am
if you want to change the world, be the change.

65 Dm7b5 C/G E7/Ab Am G C
It's the way we'll change the world, be the change.